

Hand Gel

Rapid action. Suitable for frequent use.

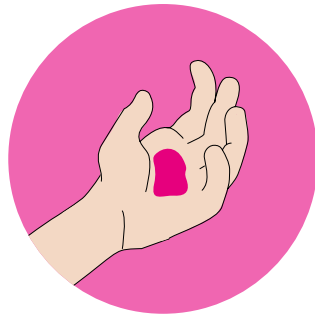
⚠ Always Read Product label and Material Safety Data Sheet before use. For Professional use only.

⚠ Always wear required PPE when handling chemicals.



1

Ensure hands are clean and dry. Dispense approx 5ml into palm of one hand.



2

Rub hands palm to palm. Rub palms over the backs of each hand and rub with fingers interlaced.



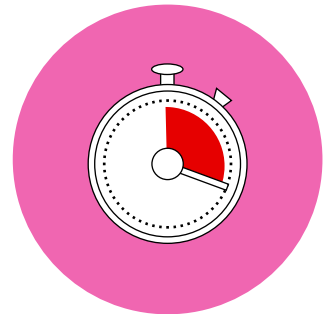
3

Rub the thumbs in the opposing palm.



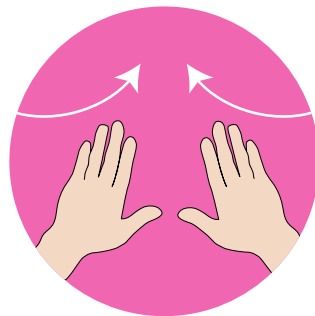
4

Ensure all surfaces of the hands are covered and keep rubbing for 30 seconds.



5

Allow the hands to dry naturally.



Contact times
Bactericidal, Yeasticidal, Virucidal against enveloped viruses (including Coronavirus) – 30 second contact time.

Composition
Ethanol, Aqua, Propylene Glycol, Carbomer, Polysorbate-20, Aminomethyl Propanol, Parfum (Limonene, Coumarin), dye. Active: Ethanol 62% w/w.

Danger
DANGER. H225: Highly flammable liquid and vapour. First aid procedures. H319: Causes serious eye irritation. P305+351+338: IF IN EYES: Rinse cautiously with water for several minutes. Remove contact lenses, if present and easy to do. Continue rinsing. P337+313: If eye irritation persists: Get medical advice/attention. P101: If medical advice is needed, have product container or label at hand. UK number for poison advice: 111. Storage. P210: Keep away from heat, hot surfaces, sparks, open flames and other ignition sources. No smoking. P403+P233: Store

in a well-ventilated place. Keep container tightly closed. P235: Keep cool. Fire procedures. In case of fire: Use alcohol resistant foam or carbon dioxide to extinguish. In combustion emits toxic fumes. Vapour may travel considerable distance to source of ignition and flash back. Spill / Disposal procedures. Eliminate all sources of ignition. Do not use equipment in clean-up procedure which may produce sparks. Absorb into dry earth or sand. Do not discharge into drains or rivers. Contain the spillage using bunding. Transfer to a suitable container and arrange for collection by specialised disposal company. Dispose of container in accordance with national regulations. Suitable for use by the general public. Formulation type: AL.

Tested to Standards
EN14776, EN13727, EN13624, EN1500.

UFI: XP00-D0EG-D003-WW51

Available at g9chemicals.com



Your only solution



Bottle and boxes widely recycled